

Graphic Software for KSA700/FP1500 Fire Systems (multi-panel) USB

PCG-GraphicNWU

The PCG-Config series consists of 3 software applications. The individual software formats allows the graphic package to grow with the installation. PCG-ConfigNWU allows for monitoring on networked systems with multiple panels. It uses a USB hardware key for protection of the software.

Specifications

Hardware requirements

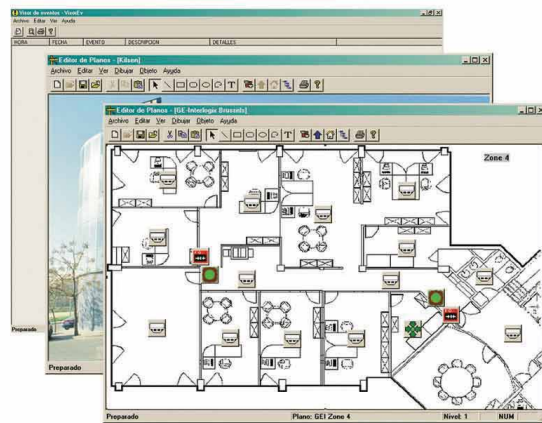
| | |
|-----------------|--|
| Communication | RS232, modem and/or TCP/IP |
| Display | SVGA or higher resolution |
| Hard disk | 2 Gb with 650 Mb free space |
| Keyboard | Required |
| Pointing device | Required |
| Printer | System printer required for printing |
| Processor | 1 GHz or higher Pentium III-compatible CPU |
| RAM | 256 Mb or more |
| Removable media | 1.44 Mb stiffer and CD-ROM or DVD drive |

Software requirements

| | |
|------------------|-----------------------------|
| Operating system | Windows '98 or Windows 2000 |
|------------------|-----------------------------|

Ordering Information

PCG-GraphicNWU Graphic Software for KSA700/FP1500 Fire Systems (multi-panel) USB



- Bi-directional communication with single panels and networked fire systems
- Local or remote connection via modem or TCP/IP
- Large selection of user configurable icons
- Visualises device alarms and status of in- and outputs
- Event texts retrieval from the panel
- Configurator and operator control levels
- Navigation buttons allowed
- Event logs with reporting facilities
- Basic drawing package included
- Imports bmp & drw format graphics
- USB or Parallel hardware key