

**WingStile WS**

**Motorised Entrance Gate for Internal Installation**

**Technical Specification**

<b>Drive:</b>	Motorised
<b>Orientation:</b>	Pass Left or Pass Right
<b>Materials:</b>	<p>Rotor Column: 220mm dia 304 Grade Grained Stainless Steel (EN 10088-2 Grade 1J/2J).</p> <p>Rotor Wing: 10mm thick clear toughened frameless Glass panel giving a max. 1000mm clear opening.</p>
<b>Function:</b>	Passage in both directions, electronically controllable.
<b>Method of Operation:</b>	On receiving a signal from the access control system or pushbutton, the unit will unlock and drive through 90 degrees away from signal direction. Should the wing meet any resistance it will stop and nudge forward. If obstruction continues the unit will alarm and free wheel. An Auto Reset will re-establish control
<b>Power Failure:</b>	<p>In the event of an emergency or isolation of power supply, unit will fail-safe i.e. rotor would freely turn in both directions.</p> <p>Fire Alarm – Input facility available for voltage free contact supplied by others to effect fail safe state.</p>
<b>Interface:</b>	Potential-free contact provided by either a cardreader or pushbutton input. Cardreader inhibit and reset output signals available as standard.
<b>Power Supply:</b>	115/230 Volts AC 50/60 Hz
<b>Power Rating:</b>	80 VA per Walkway
<b>Logic Voltage:</b>	24 Volt DC
<b>Installation Details:</b>	WingStile WS range is delivered kit form i.e. Wing and Rotor which may require lifting gear for off loading. Approximate weight 75 kg



**Product Description**

The WingStile from our Regulate range is an alternative approach to flow control.

The subtle design offers a minimal presence and easily integrates into any environment and complements our other security products as a disabled gate.

**Users include**

- Government
- Retail
- Finance
- Telecommunications
- Information Technology
- Banking
- Publishing
- Leisure
- Petrochemical
- Education



## Models Available

### WingStile Motorised Entrance Gate

- Model WS 1000mm clear opening.

## Standard Materials

### Rotor cladding and casework material choice

- 304 Grade Polished Stainless Steel, Ref: GM Type 3
- 304 Grade Grained Stainless Steel, Ref: GM Type 2
- CZ108 Polished Brass
- CZ108 Grained Brass

## Standard Accessories and Optional Extras

### Alternative Materials, Finishes and Custom Design

- Refer to Gunnebo Mayor for specific material design requirements.

### Alternative Wing

- Selection of different glass panels to suit available space.
- Smaller panels to create tandem operations
- Stainless Steel 'P' leaf open design.
- Stainless Steel 'P' leaf with infill bars.

### Cardreader Mounting (Please refer to Gunnebo Mayor for feasibility)

- Cardreader Pedestals.

### Battery Back Up System.

- Maintains all 24V control facilities for 500 operations or 4 hours whichever the sooner. Remotely located.

### Push Button Control

- Simple console to control WingStile rotor release.
- Remote console to specific requirements
- Push Button Pedestal.

### Hand held programmer

- Required to set up new installations.

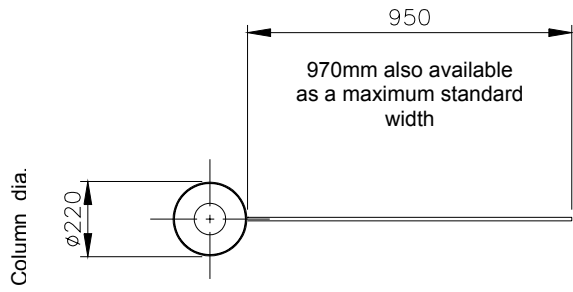
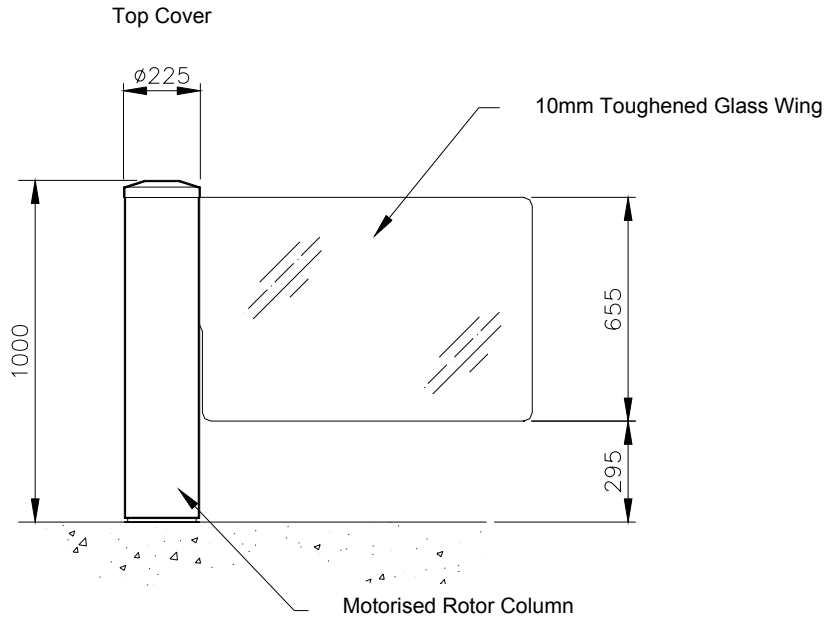
### Push bar

- Affixed to the top of the glass wing to match casework choice.

## Installation Examples



# Site Preparation WingStile



Concrete to BS 5328: 1997 specification, type ST5.  
 Base to be flat and level to +/-5mm over footprint area.  
 Rotor Column Base min 300 x 300 x 300mm

**IMPORTANT**

- Floor Anchors to be drilled during installation, 12mm dia. x 100mm deep.
- Any horizontal pipe or conduit runs below the WingStile must be at least 140mm below

# GUNNEBO MAYOR

**ENTRANCE CONTROL SOLUTIONS**

**United Kingdom**

Gunnebo Mayor Ltd. Bellbrook Business Park, Uckfield, East Sussex, TN22 1QQ.  
Tel +44 (0) 1825 761022 Fax +44 (0) 1825 763835

Gunnebo Mayor Ltd. Orient House, Newton Street, Hyde, Cheshire, SK14 4RX  
Tel +44 (0) 161 882 5900 Fax +44 (0) 161 882 5910

[www.gunnebomayor.com](http://www.gunnebomayor.com)

*Note: In pursuit of its policy of continuous refinement and improvement, Gunnebo Mayor Ltd. reserves the right to modify design and details.*

**A COMPANY WITHIN THE GUNNEBO GROUP**.....

**HEAD OFFICE SWEDEN – Gunnebo Entrance Control AB, SE-590 93, Gunnebo.**  
Tel +46 (0) 490 89000, Fax +46 (0) 490 23889

**DENMARK** Gunnebo Protection A/S  
Division Entrance Control  
Erhvervsparken 3, DK-4621 Gadstrup  
Tel +45 46 19 14 66  
Fax +45 46 19 14 55

**FRANCE** Gunnebo Entrance Control SARL  
Zone d'Activites Le Mandinet,  
20 Rue des Campanules  
F-77185, Lognes  
Tel +33 (0) 1 64 80 14 40  
Fax +33 (0) 1 64 80 14 39

**GERMANY** Gunnebo Entrance Control GmbH  
Diagonalstrasse 41, D-20537  
Hamburg  
Tel +49 (0) 40 47 11 30 0  
Fax +49 (0) 40 47 11 30 79

**HONG KONG** Gunnebo Entrance Control  
Room 2312, C.C. Wu Building,  
302-308 Hennessy Road, Wanchai.  
Tel +852 2882 8337  
Fax +852 2523 7880

**ITALY** Gunnebo Italdis SpA  
Via A Volta 15 - IT 38015  
Lavis (TN)  
Tel +39 0461 248 900  
Fax +39 0461 248 999

**NORWAY** Gunnebo Troax A/S  
Division Entrance Control  
Postboks 179, Kalbakken N-0903, Oslo  
Tel. +47 22 80 42 00  
Fax +47 22 80 42 01

**SPAIN** Gunnebo Entrance Control  
BBC, Comte d'Urgel 143, lola 08036,  
Barcelona  
Tel +34 93 452 59 56  
Fax +34 93 451 56 53

**SWEDEN** Gunnebo Entrance Control  
Box 500, Kumla Gardsvag 33F, 145 63  
Norsborg  
Tel +46 (0)8 53 17 15 75  
Fax +46 (0) 8 53 18 85 39

**UNITED KINGDOM** Gunnebo Mayor Ltd  
Bellbrook Business Park, Uckfield,  
East Sussex, TN22 1QQ  
Tel +44 (0) 1825 761022  
Fax +44 (0) 1825 763835

**USA** Gunnebo Omega Inc  
5056 Commercial Circle, Suite E,  
Concord, California, CA 94520  
Tel +01 925 609 6339  
Fax +01 925 603 0810