

PCG-Graphic102

Graphic Software for KSA700/FP1500 Fire Systems (1 panel-2 loops)

General

The PCG-Config series consists of 3 software applications. The individual software formats allows the graphic package to grow with the installation. The smallest version, PCG-Config102, operates with a single panel and allows for the configuration of all devices up to a maximum of two loops. PCG-Config105 supports a single panel also, but up to 5 loops. PCG-ConfigNW allows for monitoring on networked systems with multiple panels. Upgrades from one version to the other do not require rework on the existing configurations, drawings, etc.

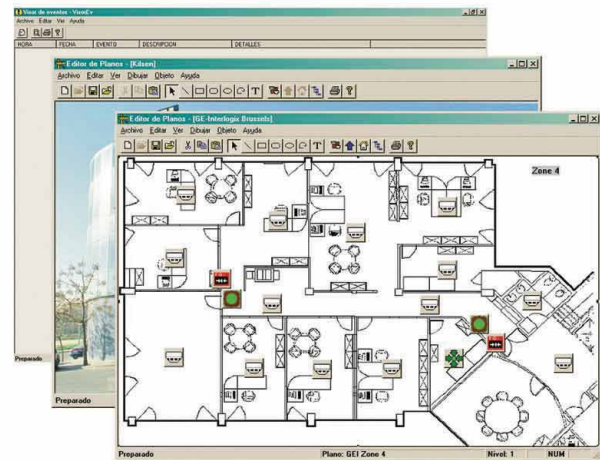
The Application

PCG-Graphic provides the user with a graphical front end to visualize the alarms occurring at the panel, to take actions on these alarms, and to log and acknowledge the alarms on the PC. Alarms, faults, and disable conditions are indicated per point, together with changes of inputs and outputs.

The software's library includes a wide selection of objects (icons), but the user also has the ability to add new icons and/or change any of the existing objects. The different icons can be placed on these floor plans by simple drag & drop commands. Floor plans may be imported in bmp format. Any number of plans are available for each panel. Plans may be linked by easy-to-use, navigation buttons. To save precious programming time and avoid mistakes, the sensor text information is supplied directly from the panels.

All functions in the software are accessible from drop down menus as well as toolbar buttons. Every menu function and toolbar button has a short and descriptive help text, giving the operator assisting information as the function is selected. Configuration menus are password protected. Used with the KSA700/FP1500 fire panels, the package also allows visualizing the real time information kept for each sensor. Selecting any icon visualises its address, types and condition.

Navigation buttons can be created to easily move around the building.



Standard Features

- **Bi-directional communication with single panels and networked fire systems**
- **Local or remote connection via modem or TCP/IP**
- **Large selection of user configurable icons**
- **Visualises device alarms and status of in- and outputs**
- **Event texts retrieval from the panel**
- **Configurator and operator control levels**
- **Navigation buttons allowed**
- **Event logs with reporting facilities**
- **Basic drawing package included**
- **Imports bmp & drw format graphics**



PCG-Graphic102

Graphic Software for KSA700/FP1500 Fire Systems (1 panel-2 loops)

Specifications

Hardware requirements

Communication	RS232, modem and/or TCP/IP
Display	SVGA or higher resolution
Hard disk	2 Gb with 650 Mb free space
Keyboard	Required
Pointing device	Required
Printer	System printer required for printing
Processor	1 GHz or higher Pentium III-compatible CPU
RAM	256 Mb or more
Removable media	1.44 Mb floppy and CD-ROM or DVD drive

Software requirements

Operating system	Windows '98 or Windows 2000
------------------	-----------------------------

Network Version

For larger applications, PCG-GraphicNW may be used. This software allows for the monitoring of multiple, networked panels. PCG-Graphic102 or PCG-Graphic105 (that both allow for the supervision of one panel only) may seamlessly be upgraded to PCG-GraphicNW without having to change any configuration information.

The program is protected by means of a protection key (dongle).

Ordering Information

Part No.	Description
PCG-Graphic102	Graphic Software for KSA700/FP1500 Fire Systems (1 panel-2 loops)



GE Security

www.gesecurity.com

As a company of innovation, GE Security reserves the right to change product specifications without notice. For the latest product specifications, visit GE Security online or contact your GE Security sales representative.