



ATS3099

8 - 64 zone integrated security panel / Int.(English)

Intruder Alarm System

The Advisor MASTER is a full-blown intruder alarm system with more than 70 different input types. A maximum of 64 zones (inputs) can be programmed to operate over 4 independent alarm systems (areas). Zones may be assigned to a specific area (offices, stores, etc.) or common to all (reception, canteen, etc.). Each area may have its separate RAS.

Integrated Access Control

All the ATS panels can control 16 doors and allow users to disarm alarm areas as access is granted. All panels also feature the exclusive "3 times badging" to arm. A further 48 "intelligent" doors can be controlled through optional 4-Door Controllers connected on the RS485 data bus.

Complete Family

The Advisor MASTER is a family of 4 control panels that all share the same software, accessories & manuals and only differ by the database & enclosure sizes.

Modular RS485 data bus

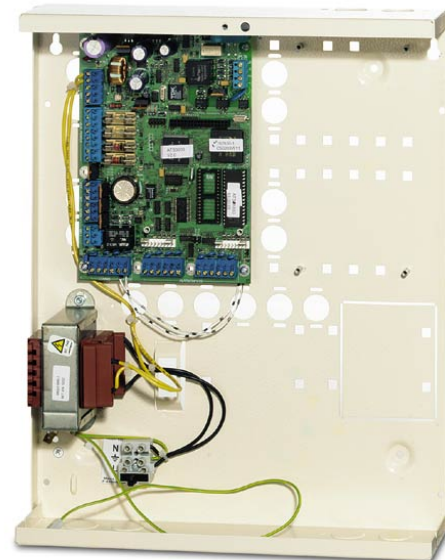
The Advisor MASTER communicates with up to 16 RAS's & 15 DGP's using the RS485 data bus. All remote devices on the bus are continuously polled to ensure correct operation and can be connected in star or loop configuration using the optional ATS1740 or ATS1742 interfaces.

Alarm Reporting

The ATS panels are capable of reporting alarms and specified events using a variety of formats (SIA, XSIA, CID, 200 Bd FSK or voice messaging) via either the build-in PSTN dialer or via the optional ISDN-B channel adapter. The ISDN-D is available in the BENELUX for X-25 D-channel reporting via ISDN. In conjunction with the ATS1801 and ATS1806 a TCP/IP reporting connection can be established for the Osborn and Hoffmann receiver. Up to 4 central stations with 2 phone numbers per CS give 8 possible reporting connections.

PLC Flexibility

The Advisor MASTER offers a total of flexibility in programming up to 255 outputs through 24 macro logic equations.



Standard Features

- **Integrated alarm & access control system for up to 64 zones, 8 areas & 64 doors**
- **Modular RS485 data bus with continuous polling of up to 16 RAS and 15 DGP**
- **PLC with 24 macro logic equations**
- **255 freely programmable outputs**
- **Built-in PSTN dialer**
- **2 or 4 state monitored analogue inputs**
- **Programming, monitoring and service by PC either directly on site or from a remote location**
- **European software**
- **Switched mode power supply**
- **Steel enclosures**
- **EN50131-1 compliant; Enviromental Class 2, Security Grade 1-2-3**

ATS3099

8 - 64 zone integrated security panel / Int.(English)

Specifications

System split (areas)	8
Inputs on board	8
Max. inputs in database	64
ATS1202 at panel end / Number	Yes / 3
Outputs on board	Ext. siren / Int. siren strobe/1 programmable relay
Max. number of OC outputs (on unit)	255
Remote Arming Stations	16
Data gathering panels	15
Alarm groups	74 - 138*
Standard doors on control panel	16
Intelligent doors on 4-door controllers	48
Door groups	10 - 128*
Floor groups	10 - 64*
Users (cardholders)	50 - 11466*
Users with name	50 - 200*
4 to 10 digit pin codes	50 - 1000*
Alarm events in the log	250 - 1000*
Access events in the log	10 - 1000*
Specified cable	WCAT 52/54 or equivalent
Power supply	13.8 VDC / 2 A
Operating temperature	0° to +50°C
Mains transformer	230 V 50 Hz/23 VAC 56 VA
Housing dimensions (W x H x D)	315 x 388 x 85 mm
(*) with ATS 1830 RAM memory expansion	
Only for the ATS3000/4000 models	

Analogue Inputs

All the inputs of the ATS panels are analogue inputs, which enables the measurement of input loops resistance (in Ohms or Voltages) for diagnostic purposes. The inputs can be 2 or 4 state monitored with EOL resistors of 2k2, 4k7 or 10k Ohms. All the control panels are TITAN Diagnostic_i enhanced and can be measure the voltage and current supplied to all the devices on the RS485 data bus.

European Software

The ATS control panels have the same software across Europe with different country default setting. This allows international customers to streamline their security equipment and promote common security procedures throughout their European operations.

Ordering Information

Part No.	Description
ATS3099	Integrated Alarm & Access Control Panel, up to 64 zones, 8 areas & 64 doors / Int.(English) re-programmable EPROM



GE Security

www.gesecurity.com

As a company of innovation, GE Security reserves the right to change product specifications without notice. For the latest product specifications, visit GE Security online or contact your GE Security sales representative.

IPS-ATS3099-2004-10-6 11:26:42 Released : 27.09.2004;